

## Product Code

MD51



## Technical Description

## A Standout Star

- One of our most popular fittings and a versatile all-rounder with a flexible design and a range of configurations
- A deep-set light source and a low-glare aluminium reflector for excellent optical comfort
- Improved efficacy (up to 137lm/W at CRI90) with our new Mondolux HE+ chip\*
- Reduces the overall power consumption while meeting the new BCA regulations for retail applications\*
- Available in standard, high-output HE+ and full-spectrum high-CRI ComfoLED versions
- Flexible mounting clip to accommodate ceiling thicknesses ranging from 5mm to 30mm
- Maximum tilt angle of 30°
- If you require a customised version of this product, please [contact us](#)

\*Applicable for HE+ version

## Electrical Specifications

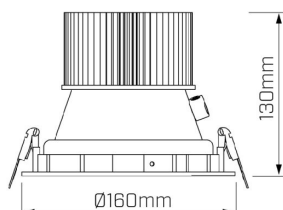
System Power	14W, 19W, 27W, 35W, 42W, 50W
Input Voltage	240V
Control Type	ON/OFF, 0-10V, Phase-Cut, DALI, Casambi, DMX
System Efficacy (max.)	137lm/W
Power Factor	> 0.9

## Photometric Info

Luminaire Lumens	1580lm, 1880lm, 2220lm, 2600lm, 2850lm, 3520lm, 3545lm, 3685lm, 4400lm, 4480lm, 5025lm
CRI	CRI90, CRI97+
CCT	2700K, 3000K, 3000K ComfoLED, 3000K HE+, 3000K Vivid, 3500K, 3500K HE+, 4000K, 4000K ComfoLED, 4000K HE+, 5000K
Beam Angle	10°, 20°, 40°, 50°
Lumen Maintenance	> 50, 000hrs (L80 B10)
MacAdam Step	3 Step

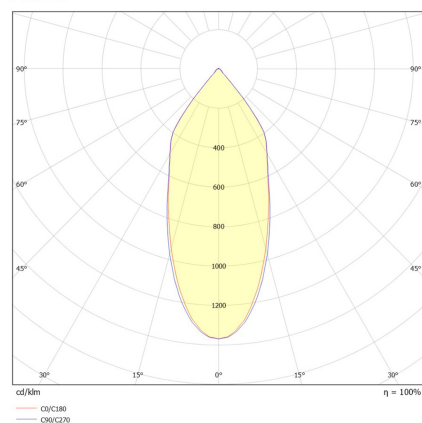
## Physical Characteristics

Installation Method	Adjustable Recessed
Trim Finish	White, Black
IP Rating / IK Rating	IP20
Weight	1Kgs
Maximum Tilt Angle	30°
Maximum Rotation Angle	355°
Fitting Material	Aluminium

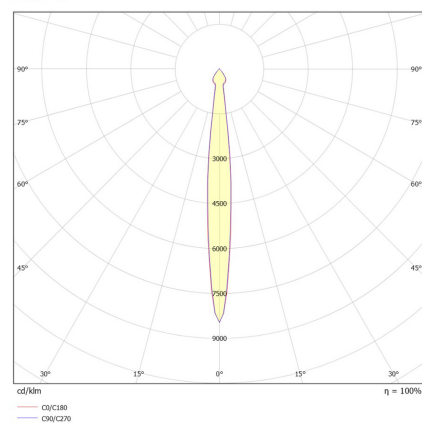


## Polar Distribution Diagrams

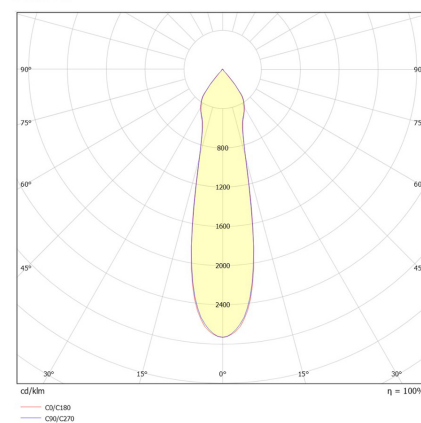
Polar 50°



Polar 10°



Polar 20°



## Polar

DOWNLIGHT

Polar 40°

